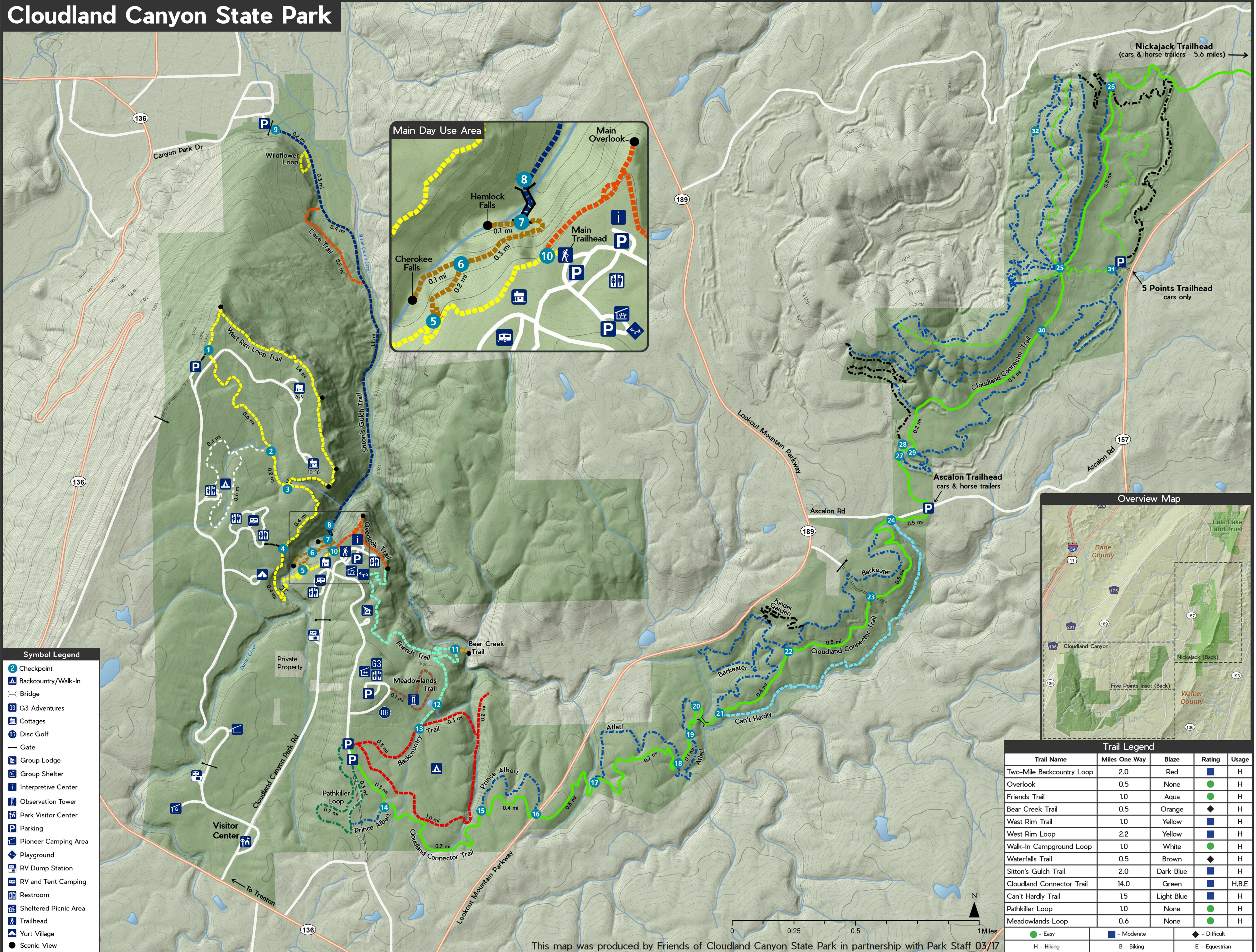
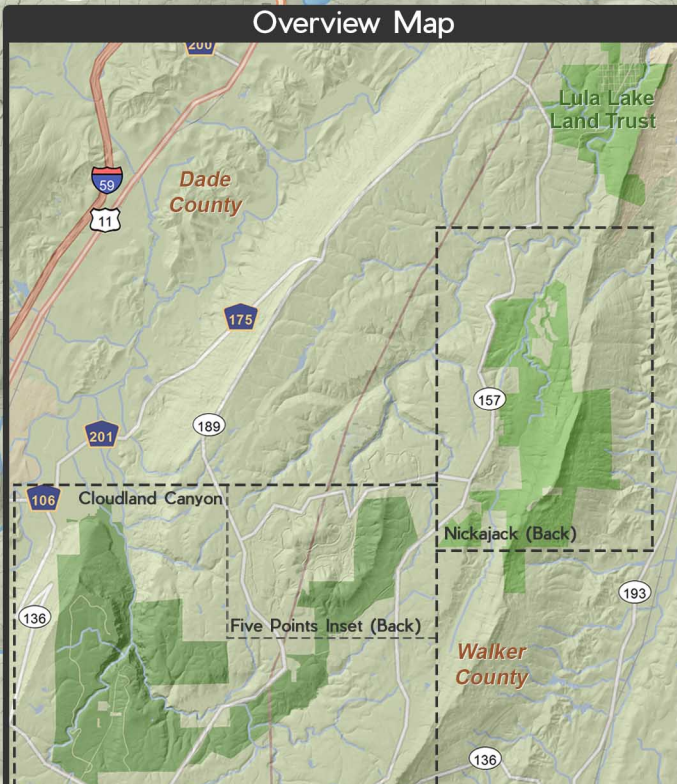


Cloudland Canyon State Park



- Symbol Legend**
- Checkpoint
 - Backcountry/Walk-in
 - Bridge
 - G3 Adventures
 - Cottages
 - Disc Golf
 - Gate
 - Group Lodge
 - Group Shelter
 - Interpretive Center
 - Observation Tower
 - Park Visitor Center
 - Parking
 - Pioneer Camping Area
 - Playground
 - RV Dump Station
 - RV and Tent Camping
 - Restroom
 - Sheltered Picnic Area
 - Trailhead
 - Yurt Village
 - Scenic View



Trail Legend

Trail Name	Miles One Way	Blaze	Rating	Usage
Two-Mile Backcountry Loop	2.0	Red	■	H
Overlook	0.5	None	●	H
Friends Trail	1.0	Aqua	●	H
Bear Creek Trail	0.5	Orange	◆	H
West Rim Trail	1.0	Yellow	■	H
West Rim Loop	2.2	Yellow	■	H
Walk-In Campground Loop	1.0	White	●	H
Waterfalls Trail	0.5	Brown	◆	H
Sitton's Gulch Trail	2.0	Dark Blue	■	H
Cloudland Connector Trail	14.0	Green	■	H,B,E
Can't Hardly Trail	1.5	Light Blue	■	H
Pathkiller Loop	1.0	None	●	H
Meadowlands Loop	0.6	None	●	H

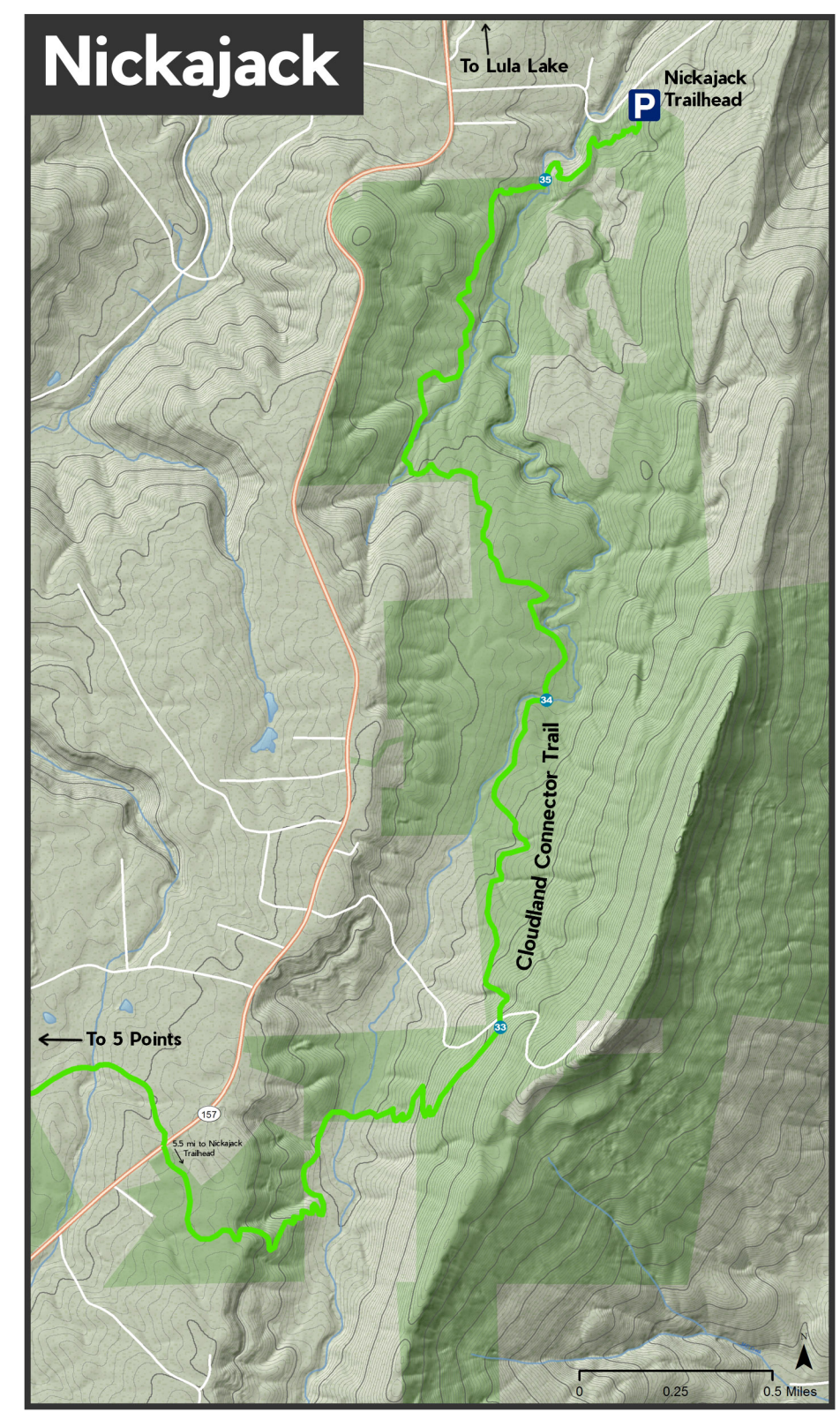
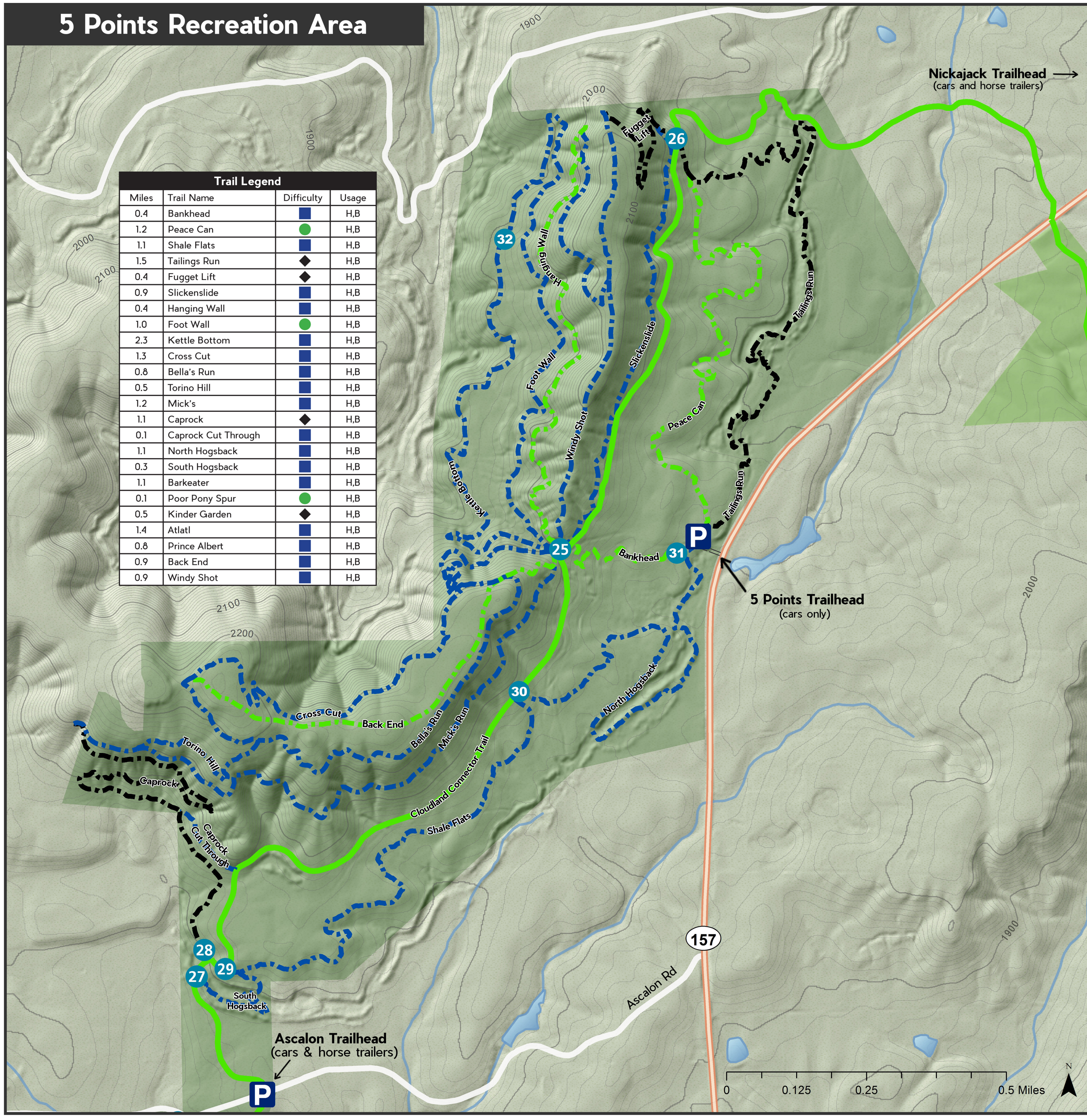
● - Easy	■ - Moderate	◆ - Difficult
H - Hiking	B - Biking	E - Equestrian

This map was produced by Friends of Cloudland Canyon State Park in partnership with Park Staff 03/17

5 Points Recreation Area

Nickajack

Trail Legend			
Miles	Trail Name	Difficulty	Usage
0.4	Bankhead	■	H,B
1.2	Peace Can	●	H,B
1.1	Shale Flats	■	H,B
1.5	Tailings Run	◆	H,B
0.4	Fugget Lift	◆	H,B
0.9	Slickenside	■	H,B
0.4	Hanging Wall	■	H,B
1.0	Foot Wall	●	H,B
2.3	Kettle Bottom	■	H,B
1.3	Cross Cut	■	H,B
0.8	Bella's Run	■	H,B
0.5	Torino Hill	■	H,B
1.2	Mick's	■	H,B
1.1	Caprock	◆	H,B
0.1	Caprock Cut Through	■	H,B
1.1	North Hogsback	■	H,B
0.3	South Hogsback	■	H,B
1.1	Barkeater	■	H,B
0.1	Poor Pony Spur	●	H,B
0.5	Kinder Garden	◆	H,B
1.4	Atlatl	■	H,B
0.8	Prince Albert	■	H,B
0.9	Back End	■	H,B
0.9	Windy Shot	■	H,B



GEORGIA
DEPARTMENT OF NATURAL RESOURCES

CLOUDLAND CANYON STATE PARK

Trail Map

122 Cloudland Canyon Park Road
Rising Fawn, GA 30738
Visitors Center: 706-657-4050
After Hours / Emergency: 706-657-6442
GeorgiaStateParks.org/CloudlandCanyon



To learn about volunteering visit
CloudlandCanyon.org

